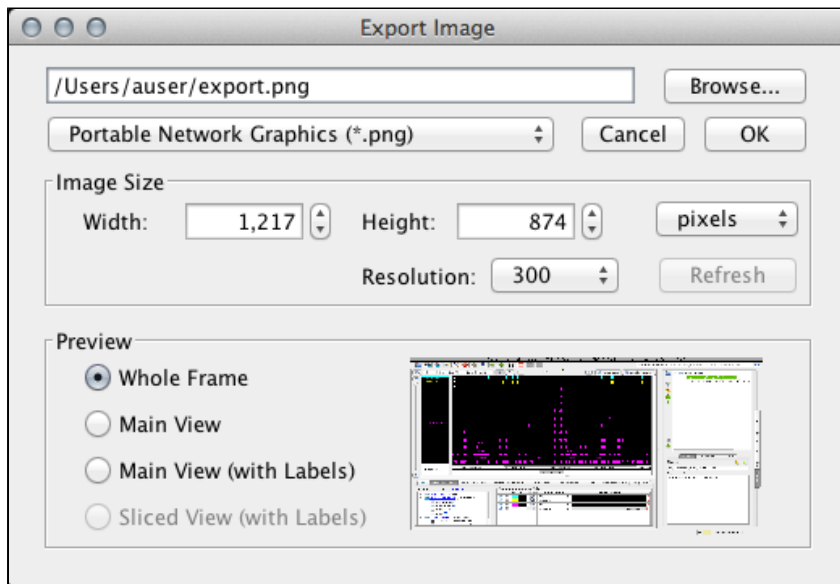


# Exporting and saving images

- Saving images
  - Image export options
- Printing


## Saving images

To save an image, select **File > Save Image...** A window similar to the image below will open.



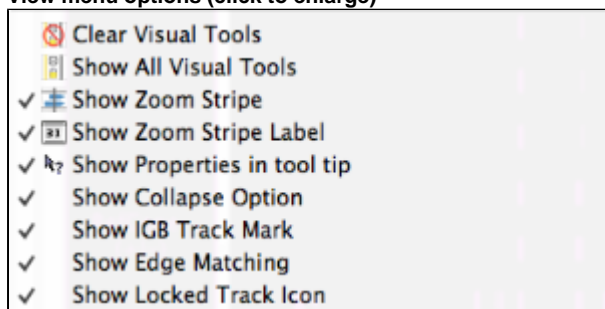
## Image export options

- **Image format** IGB supports PNG, JPEG, and SVG.
- **Image size** Select image size. Default values are the current dimensions of the IGB window. Aspect ratio is locked. To change the aspect ratio, resize the IGB window and click the **Refresh** button.
- **Export options** (Preview)
  - **Whole Frame** includes the entire IGB window
  - **Main View (with Labels)** includes tracks and track labels only.
  - **Sliced View (with Labels)** is available only when the Sliced View tab is open. It will export the image from the **Sliced View** tab.

 Due to limitations of the SVG file format, SVG files exported using the **Whole Frame** option may contain some undesired artifacts.

Use the **View** menu to show or hide parts track decorations and other visual tools, such as the zoom stripe, edge matching marks, or the zoom stripe label.

### View menu options (click to enlarge)



## Printing

- **File > Print Main View with Labels...** prints tracks and track labels only

- **File > Print Whole Frame...** prints the entire IGB window.