

# Data Access

- [Introduction](#)
- [Data Access sub-panels](#)
  - [Available Data](#)
  - [Data Management table](#)

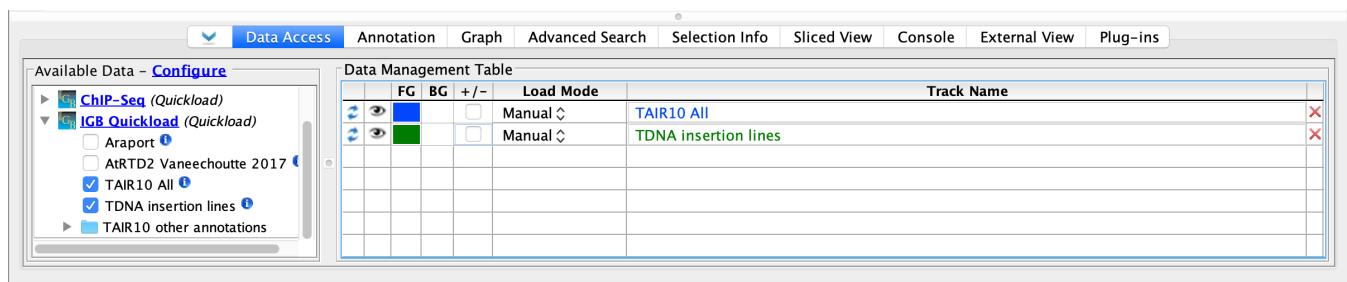
## Introduction

This tab provides an interface for loading and configuring data sets from local files or from data source listed in the Available Data sub-panel.

Use the **Data Access** tabbed panel to

- open or close data sets listed in the **Available Data** sub-panel
- get more information about available data sets or data source
- manage track appearance and loading behavior

**Data Access panel (shown in its own window)**



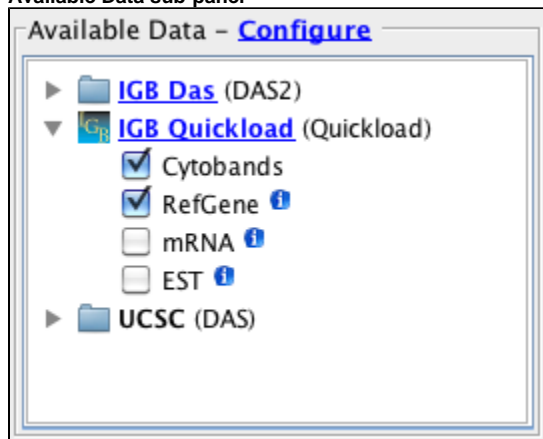
## Data Access sub-panels

### Available Data

The **Available Data** sub-panel provides access to data sets hosted on IGB data source sites, including IGBQuickLoad sites, DAS1 sites, and other compatible data servers.

- Click the checkboxes to load or unload data sets hosted on IGB data sources
- Click the "i" icons to get more information about a data set
- Click Data Source links (e.g., IGB QuickLoad) to visit the data source in your Web browser
- Click **Configure** to add or remove data servers (opens the **Data Sources** tab in the **Preferences** window)

**Available Data sub-panel**




### Data Management table

Because many data sets are very large, IGB allows you to control how and when data from a file or data set loads. The Data Management table allows you to set the IGB Load Mode, hide or show tracks, delete tracks, and configure track annotation and background colors, and combined or separate plus and minus tracks. Click in the column labeled **Track Name** to edit a track name.

Possible load modes include:

- **Manual** Data sets load into the viewer only when you click the **Load Data** button
- **Genome** Data sets load all at once
- **Auto** Data sets load only when the zoom level exceeds the threshold indicated by the autoloader threshold marker on the horizontal zoomer

[illegible]

 You can halt data loading by clicking the stop loading icon on the bottom left of the IGB window